

ANCHOR **PRO**

Video Wall Brackets

Quick Assembly

POP-OUT VIDEO WALL MOUNT

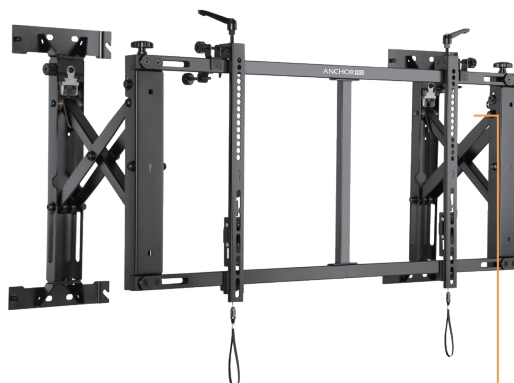
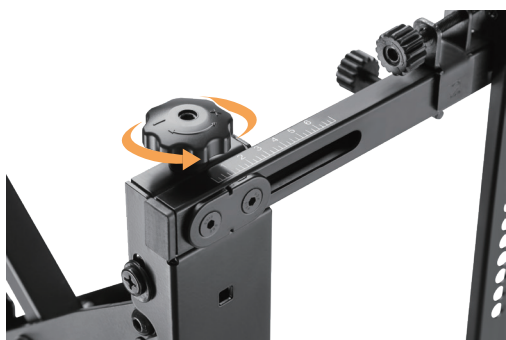


For 45"-70" LED, LCD flat panels

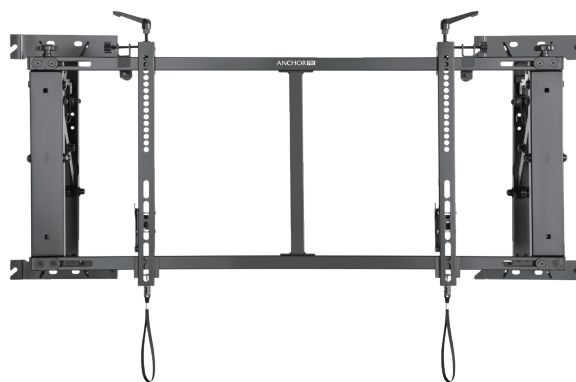
Provides a professional video wall solution universal compatibility with load capacity of 70kg/154lbs. VESA 600x400 hole pattern.

Allows unlimited display configurations and innovative pop-out function that provides quick and easy rear of screen access, Post-installation lateral shift allows screens to slide apart and back together to simplify installation and maintenance. 6 points of vertical, tilt and depth adjustment for seamless display alignment and level.

Kickstand provides 12° of tilt for easy cable management and maintenance. Anti-theft design (require for a padlock) for public displays.



Pop-Out Extension
Provides quick access for
installation and maintenance



For, more information contact:

Anchor AV, P.O. Box 121071, Dubai, U.A.E.
Tel: +971 4 3706522, Email: enquiry@anchorav.com

Copyright © 2020 Anchorav, logo are registered trademarks.
All specifications subject to change at any time. All other trademarks are the property of their respective owners.

ANCHOR PRO