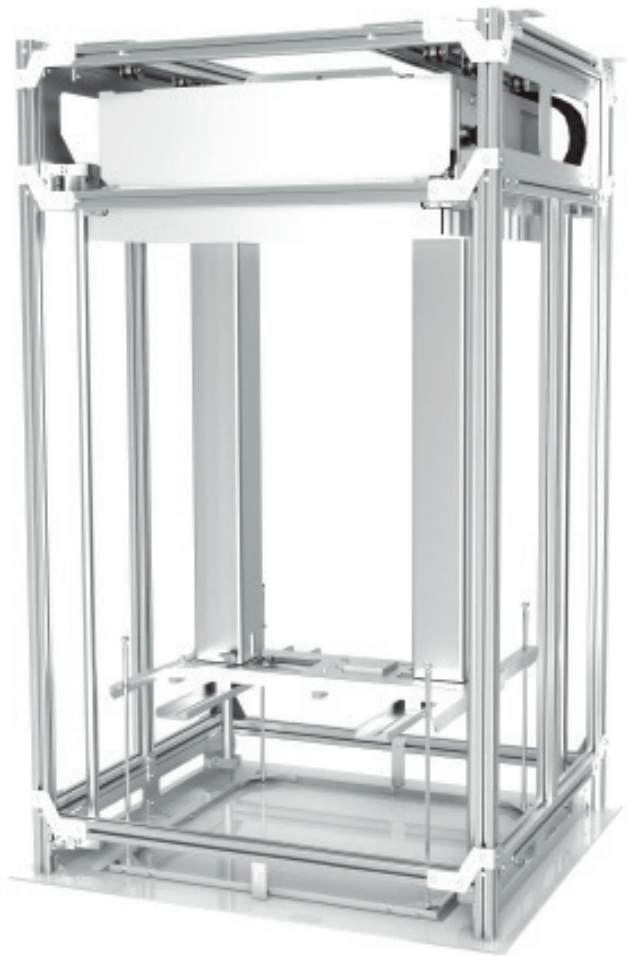


ANCHOR **PRO**

Telescopic Lift

# Heavy Duty Telescopic Projector Lift

ANLTT420H



# Heavy Duty Telescopic Projector Lift

Structural design: ANLTT420H utilizes the dual-telescopic structure which prevents the swinging problem of the projector during operation.

Drop: Maximum travel distance is 4.2 meters. The desired stop position can be easily set by the remote controller.

Projector compatibility : Almost all the projectors in the market can be mounted in the flexible claw. Easy assembly and disassembly provide an efficient workability.

Control options: RF, RS232/485.

**Minimum Space requirement :**

Type: Telescopic Projector Lift

Arm's Sections: 4 sections/ arm

Main Body Size: 1035x900x1616mm

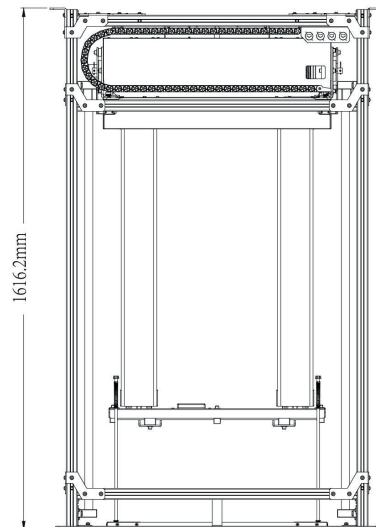
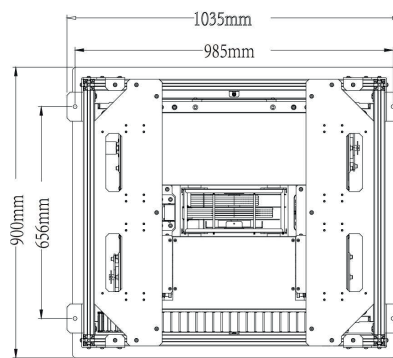
Cut-out Size: 960x860mm

Projector size: < 650(L)x650(W)x280(H)

Weight Capacity: 70kgs

Built-in Cable: AC power cord x1, CAT6 cable x 3

Control Options: RF, RS232/485, IP(optional)



Controller



Cable Wiring Duct



Decoration Plate



Adjusting Claw



For, more information contact:

Anchor AV, P.O. Box 121071, Dubai, U.A.E.  
Tel: +971 4 3706522, Email: [enquiry@anchorav.com](mailto:enquiry@anchorav.com)

**ANCHOR PRO**